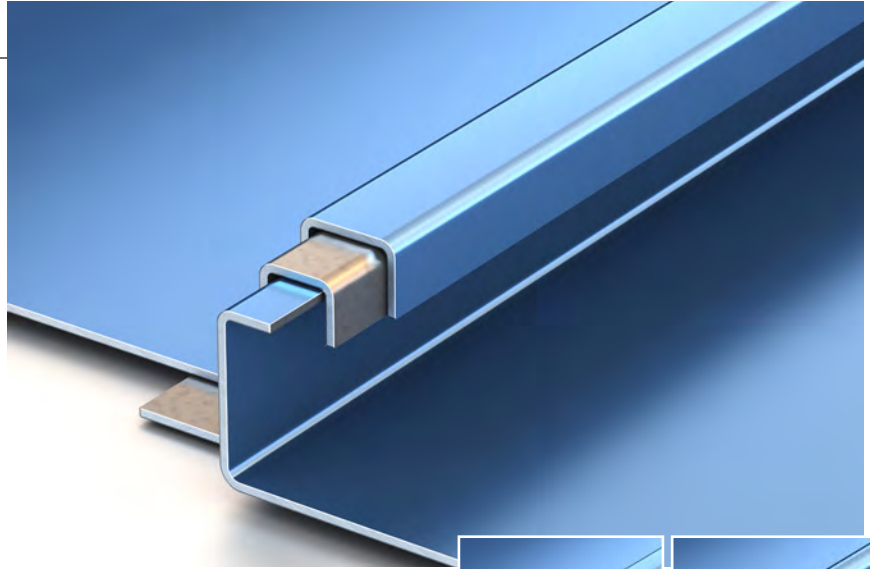


DMC 100SS Profile

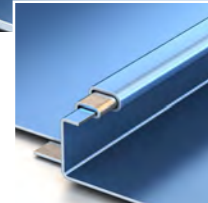
Quality materials and more than 100 years of successful design application govern the construction of our DMC 100SS 1" mechanically seamed metal roof system. Ideal for light commercial or residential applications, this smartly detailed profile can be curved for enhanced architectural appeal. Installed as full-length panels with no end laps helps provide the ultimate in all-weather and watertight protection curved installations.



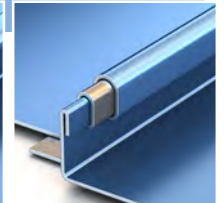
Ideal Application:

Commercial

Residential



Single lock panel



Double lock panel



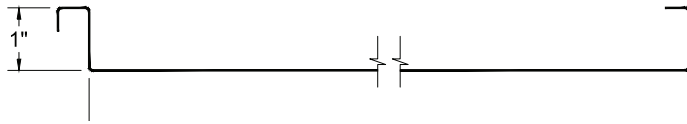
DMC 100SS Profile



Available widths:

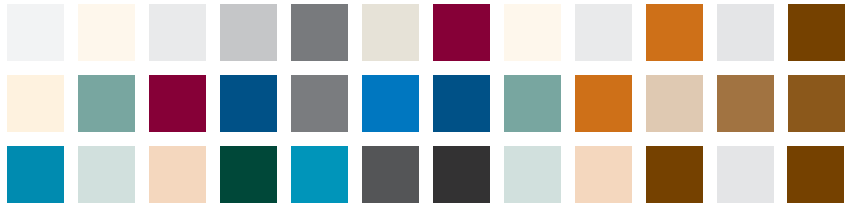
12", 14", 16", 18", 19", 20" or 21"*

*Drexel Metals design pressures, wind uplifts and test reports are for specific deck attachments, material gauges, clip spacing and panel widths. A complete specification and listing is available online at www.drexelmetals.com



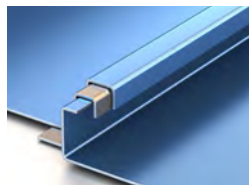
Substrates available:

- Galvalume® – 24ga and 26ga
- Drexlume® – 24ga and 26ga
- Aluminum – .032"
- Copper – 16 oz and lead-coated copper
- Falzinc

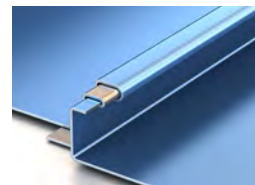


Profile Options:

- Single lock panel
- Double lock panel
- Radius panel (single or double lock)



Unseamed panel



Single lock panel



Double lock panel

Finishes and product warranty:

Available in a variety of coatings and colors by AkzoNobel. See the Drexel Metals color card for standard colors and paint specifications.



Galvalume® Substrate:
High-performance painted metal roofing product, carefully tensioned leveled for superior flatness.

35 YEAR WARRANTY

35-Year Non Pro-rated PVDF Paint Warranty

Aluminum Substrate:
High-performance painted metal roofing product, carefully tensioned leveled for superior flatness.

35 YEAR WARRANTY

35-Year Non Pro-rated PVDF Paint Warranty

Drexlume® Substrate:
Mill finished Galvalume® with a two-sided, clear acrylic finish.

25 YEAR WARRANTY

25-Year Non Pro-rated Drexlume Warranty (Acrylic Coated Galvalume)

Production options:

Factory made or field rolled to exact lengths
Optional: striation, beads, pencil ribs

Installation:

Can be installed over plywood decking and Drexel Metals MetShield® underlayment.



Slope:

Minimum slope 2:12



Minimum Roof Pitch:
2:12 – low roof pitch

Testing:

In accordance with:



- UL 580 Wind Uplift (Class 90)
- UL 2218 Class 4 Hail Impact

- UL 790 Class A Fire Rating
- UL Environmental – SRI Third Party Verified

Drexel Metals
Roofing Systems + Custom Fabrication



1234 Gardiner Lane, Louisville, KY 40213
888-321-9630 toll-free • 502-690-6174 fax



www.drexelmetals.com